




# OPAL LABELMANAGEMENT™

Excellence in Labelling







# » *BECAUSE IDENTIFICATION AND TRACEABILITY HAVE A VALUE.* «

## CHALLENGE

---

The marking of products and logistics units is an extremely demanding task, which must meet both the strict regulations of the various industries and the technical requirements for the business-critical marking processes.

In addition, business models, customer expectations and supply chain adjustments have a significant impact on the complexity to be managed.

## SOLUTION

---

OPAL with its flexible and scalable label management solution demonstrates to its customers daily that these challenges can be mastered and implemented in a secure, transparent and stable process.

OPAL LABELMANAGEMENT™ can access all static and dynamic data from SAP® and make it available to the printing processes. Through the seamless integration of our central solution into the business processes and ERP data, our customers receive a single point of management for the labelling.

# ADVANTAGES



*WITH A TRUSTY PARTNER,  
YOU DON'T HAVE TO FEAR  
HIGH MOUNTAINS.*





### **COMPLY WITH THE REGULATIONS OF YOUR INDUSTRY**

---

The chemical, pharmaceutical, medical and food industries are highly regulated industries. Other industries such as aerospace, defense, electronics, transportation logistics, automotive and retail have their own standards and requirements to be met.



### **COMPLIANCE WITH NATIONAL, REGIONAL AND LOCAL REQUIREMENTS**

---

Quality data, language, design and data format can change according to their location and recipient. Our system offers various possibilities to implement these requirements and to assign corresponding authorizations.



### **GAIN FLEXIBILITY IN YOUR APPROACH**

---

The OPAL LABELMANAGEMENT™ allows you to easily define rules that control your labels and their contents. Our flexible framework provides you with optimal support.



### **FAST AND EFFICIENT IMPLEMENTATION OF NEW REQUIREMENTS**

---

Customer-specific labels, constantly changing regulations and local requirements require a dynamic and efficient label management solution.



### **SCALE THE SOLUTION TO SUIT YOUR BUSINESS**

---

Smart label approaches are needed in small, medium-sized and internationally operating companies. With OPAL LABEL-MANAGEMENT™ you can start in a small area of your business and develop it into a comprehensive solution for your business and partners.



### **KPI'S THAT MONITOR YOUR PROCESSES**

---

The performance indicators of label management are the key to making strategic decisions and tracking their impact. The facts and figures obtained increase acceptance and awareness of the process.



### **BENEFIT FROM A PROFESSIONAL AND USER-FRIENDLY DESIGNER**

---

Any character sets, symbols, images, texts, barcodes or 2D codes are available. OPAL is compatible with the leading label design software programme on the market. Do not hesitate to select your favourite.



### **USE PRINTERS REGARDLESS OF BRAND AND MODEL**

---

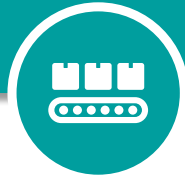
The days of dependence on one printer language are over. Take advantage of the full range of modern printing technologies. All printers with a Windows printer driver can be addressed.



## KEEP PACE WITH DIGITALIZATION

---

New customer requirements and technological advancements in web and cloud technologies are constantly helping to add new functionality. The OPAL LABELMANAGEMENT™ is compatible with SAP® S/4 HANA and is already in use in productive environments at our customers.



## MARKING OF PRODUCTS IN HIGHLY AUTOMATED PROCESSES

---

Automation is our business: In highly automated processes, the trigger for printing is the machine. Real-time information such as quantity, batch, serial number, weight and price are supplied by the machine and must be printed in-line. The solution for such requirements is called »Line Print Agent«.



## INTEGRATION OF PARTNERS WORLD- WIDE IN A NUTSHELL

---

The Web Print Client extends your labelling solution and integrates partners such as suppliers, subsidiaries, subcontractors or the extended workbench. Enable them to produce your labels without a technical connection.

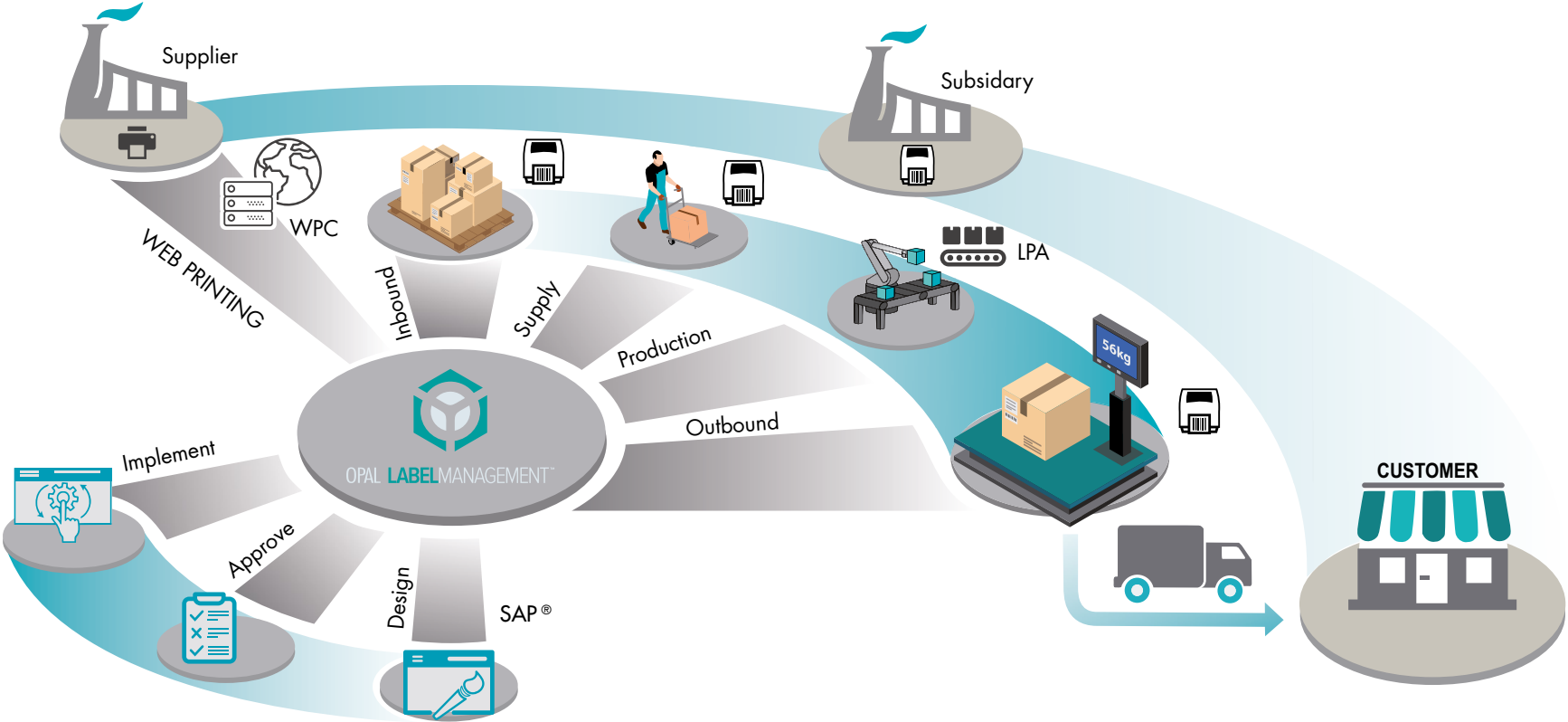


## BENEFIT FROM OUR EXPERIENCE IN MARKING PRODUCTS

---

Our experience in various branches of industry at small-, medium-sized and internationally operating companies with simple or highly complex processes makes us experts in product labelling.

# ATTRIBUTES





## PRINT COCKPIT

---

The Print Cockpit is the face to the operative user. It is trimmed for maximum user-friendliness. Operators in production and logistics can print a type label with the production order or a shipping label with the delivery note number. The print preview with information on the label material, label content and the specific printer is just a small selection of available information that is provided. You can also call print processes in SAP® using Message Control and/or BAPIs (Business Application Programming Interface) to integrate print processes into business processes. External sources can also call individual print processes via a web service.

## MONITOR

---

The monitor historically logs the completed print jobs. You can use the status, the number of labels, the printer or a date range, the print process, and much more for selection. An electronic archive is available for storage.

ONLY  
ONE  
WHO  
KNOWS  
HIS  
GOAL  
FINDS  
THE  
WAY.

— LAOZI

## THE ADMINISTRATOR

---

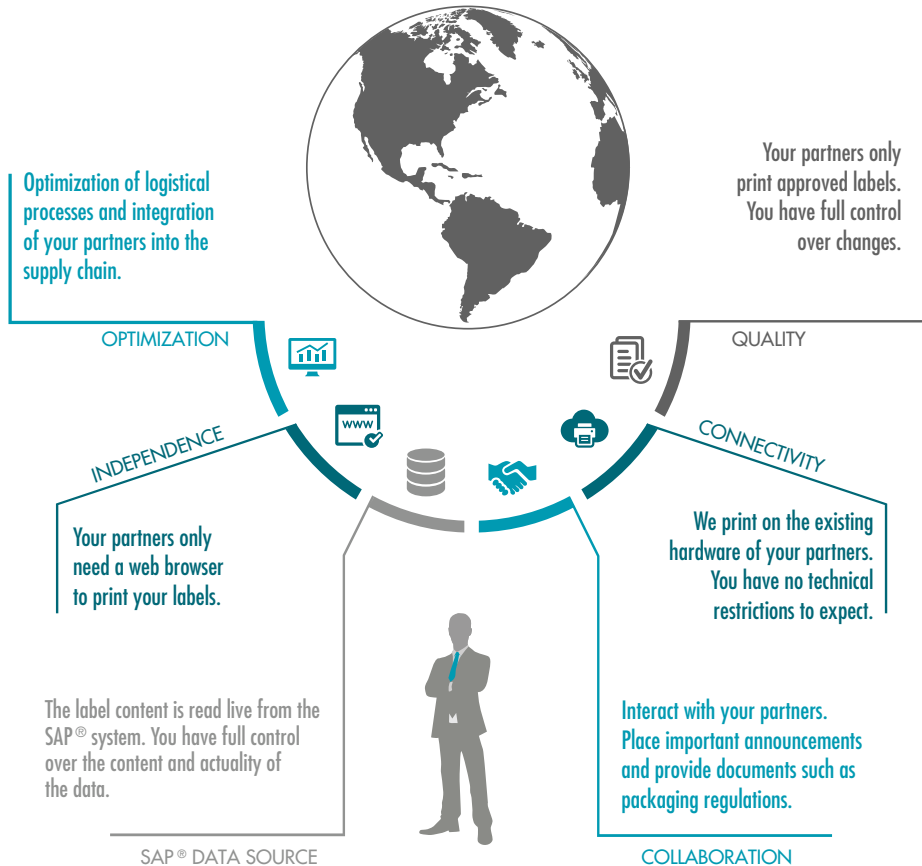
The Label Administrator is the core application in SAP® for all print processes. The data determination, rules for controlling the processes as well as print transactions and interfaces to the business processes are managed centrally in the administrator.

- The condition tables can be adapted to any parameters for the different label types (type, packaging, shipping label, etc.). A typical application would be, for example, the determination of the layout and the output language according to article, customer and location.
- The field catalog is the heart of a printing process and provides the content in the form of fields.
- Define your label materials in label supply table.
- The layout management is the view of your released layouts from the designer. Here you can define a label process, the label material and the standard setting for the layouts.
- You can use printer management to authorize and manage printers by organization and location.
- You can use the Audit Trail to make changes to the quality control system, at any time.
- You can use the predefined authorization objects to display the authorization objects stored in SAP® users, or defined users, to access the individual functions and restrict them organizationally.

# WEB PRINTING

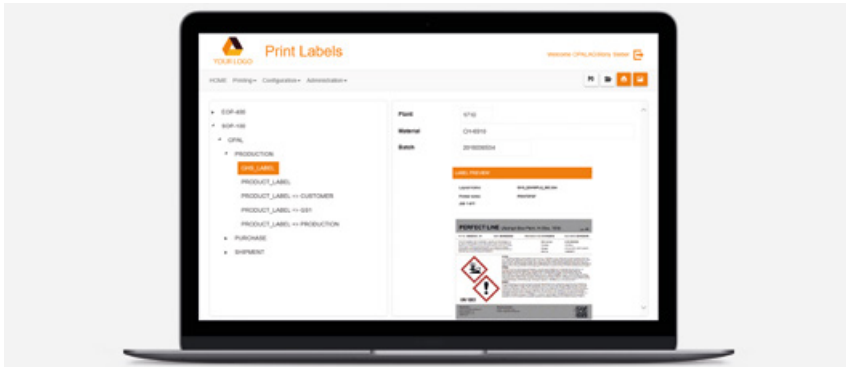
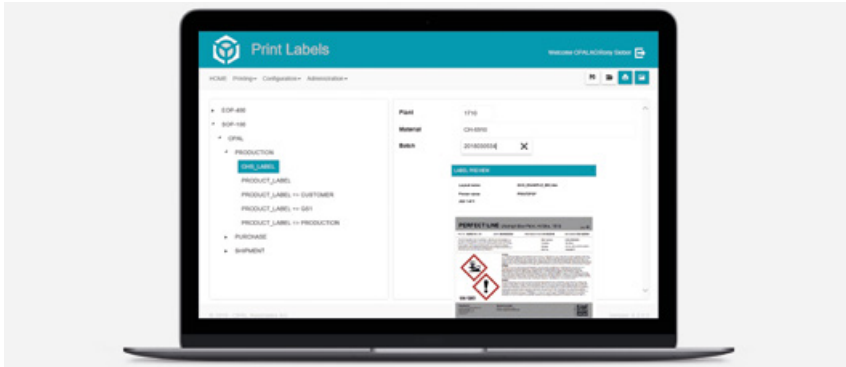
The WPC – Web Print Client is an additional module for the OPAL LABELMANAGEMENT™, which makes your labels available to your worldwide partners. Users use your local infrastructure without your technical connection.

The WPC is designed to offer your existing print transactions to your partners without additional effort in SAP®. All content and label layouts are managed directly in SAP® and are available in the WPC. Define input masks for different requirements and publish them to your partners.



## CORPORATE DESIGN

Adapt the WPC to your corporate design by using your company logo, specifying your addresses, and adjusting the color of texts and elements.



## SECURE COOPERATION

Collaboration via the web application is secured by a variety of possibilities. For authentication, users can be managed locally or via the Active Directory. With authorizations to groups or single users, you can control the available print processes for your partners.

### PROTECTION

Use the integrated user administration or Microsoft Active Directory to securely authenticate users.

### USER

Users can be grouped in the user administration. Distribute parameters for the individual users or groups to optimally control the print processes.

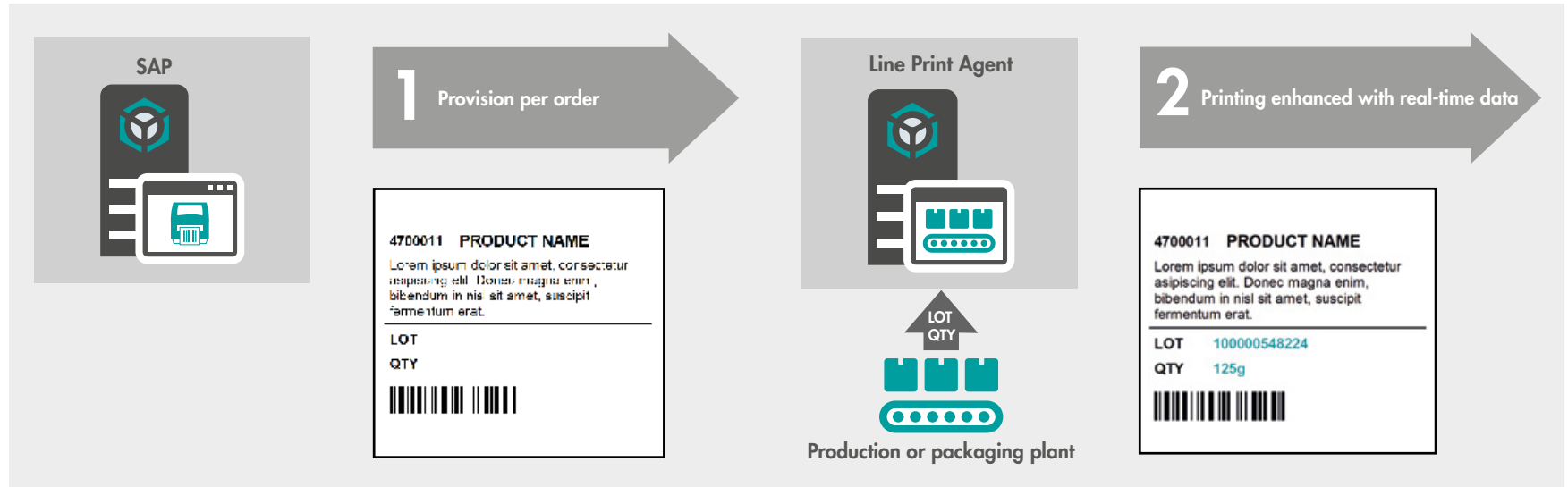
### RIGHTS

Users or groups can have different or aggregated authorizations to control the use of labels at system or organizational level.

# INLINE PRINTING

In production and packaging, label printing often takes place inline. Due to the cycle frequency, the automatic print triggering and the system availability, an independent solution is required. OPAL can support this with a fully integrated solution called »Line Print Agent«. Here the advantages of the central approach with the provision of job-specific

labels for your system as well as the locally applied real-time data come to bear. This meets the requirements for high production volumes and availability. The offline functionality guarantees productivity even in the event of SAP® system failures or during maintenance windows such as a release change.



# ADD-ONS



## MATRIX MAINTENANCE

Our Mini-Excel in SAP®. Expand your labels without development effort. Maintain, for example, customer-specific or product-specific additional data in SAP®.



## SAP® EH&S MASTER CLASS

Use GHS/CLP hazardous substance and dangerous goods data through our mapping tool directly from the SAP® Environment Health and Safety Module (EH&S).





# ABOUT OPAL

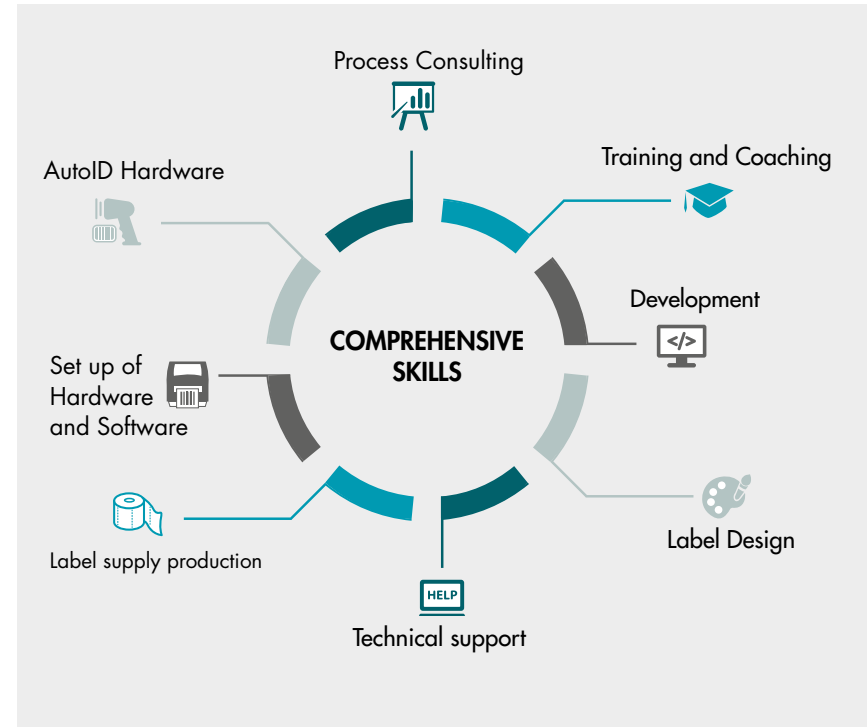
OPAL Associates Holding AG, your AutoID system integrator and partner for AutoID and SAP® solutions, registered in Wetzikon (Switzerland), has been an international leader in AutoID and SAP® since 1996. OPAL focuses on integrative and innovative concepts and sees itself as a service provider and system integrator.

## PROFESSIONAL SERVICE

We offer comprehensive support in all areas of marking. Our consultants are all familiar with the relevant standards (CLP, GHS, GS1) and best practice. Our many years of experience in a variety of projects make us experts in our field.

## SWISS QUALITY SOFTWARE

We are committed to high quality standards. Our processes are ISO-9001 compliant and based on GAMP.



[opal-holding.com](https://opal-holding.com)



# SOME OF OUR VALUED CUSTOMERS



Electronics



Chemicals



Pharmaceutical



Automotive



Industry



Food /  
Medical Technology



Others





*TRUST IS THE STRATEGY OF THE GREATEST REACH.*



— NIKLAS LUHMANN



[opal-holding.com](https://opal-holding.com)

[info@opal-holding.com](mailto:info@opal-holding.com)